



TEMPO ZERO  
QMS

# Tempo Zero QMS

per **Microsoft Dynamics 365 Business Central**

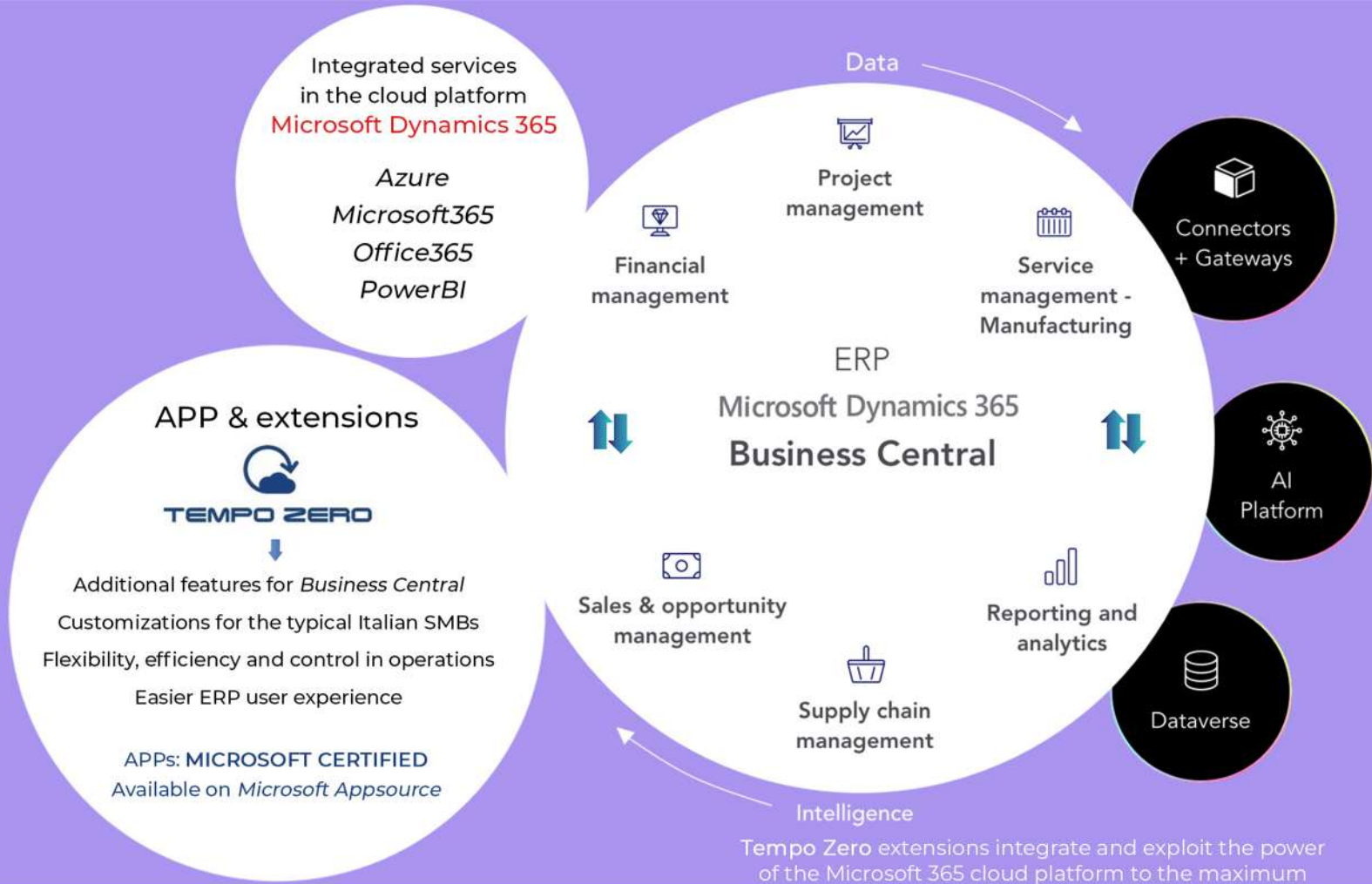
Management and Traceability of processes about  
Quality Control in Sales/Purchasing and Manufacturing



**NAV-LAB**

**NAV-lab Srl** Viale GranSasso 10, 20123 Milano - ITALY

[www.navlab.it](http://www.navlab.it) [www.business-central-app.it](http://www.business-central-app.it) [info@navlab.it](mailto:info@navlab.it) | T.: +39.0308930933



## NAV-lab: the power of shared experience

NAV-lab was founded in 2003 by a group of IT managers who chose to offer their customers the ERP Microsoft Dynamics NAV, now Business Central, as a management system capable of giving flexibility, efficiency and competitiveness to business processes in SMBs.

Since then, NAV-lab has become a fundamental partner for Microsoft in Italy.

The success of Tempo Zero, which minimizes the time of adoption of the ERP in the company, was confirmed by the rapid diffusion in terms of new users, until it became the most widespread solution today in

Italy for those who chose the Microsoft ERP.

NAV-lab's strength is its joint investment in R&D: the software laboratory where technical resources, experience and skills, gained in the group's 12 software houses, are shared.

The high quality of the assistance services offered is highly appreciated, both in the ERP start-up phases, including the study and implementation of customised solutions and in the subsequent phases of support for users' daily work.

**NAV-lab Srl** Viale GranSasso 10, 20123 Milano - ITALY

[www.navlab.it](http://www.navlab.it) [www.business-central-app.it](http://www.business-central-app.it) [info@navlab.it](mailto:info@navlab.it) | T: +39.0308930933

# Tempo Zero QMS

Tempo Zero QMS meets the needs of companies that have to manage controls within the Quality System, integrating them into *Microsoft Dynamics 365 Business Central*.

This extension allows to manage and trace the processes related to MEASURES and QUALITY CONTROL, keeping accurate technical evaluations in manufacturing and distribution/commercial companies.

The quality of a product is influenced by many interacting activities (design, supply, production). *Tempo Zero QMS* offers a series of tools to support your company in this activities in SALES/PURCHASING and MANUFACTURING areas.

## Tempo Zero QMS: examples of screens in Business Central

new fields for "control cards"

new fields for Production Order issued

control card for purchase items

control order for incoming items subject to inspection

"Open Control Chart" function for released production order lines

"Create Control Card" function for released production order lines



# Tempo Zero QMS

## MEASURES

The management of quality controls on incoming products allows to define parametrically, for each type of product managed, the following information:

- **Control tests to be carried out by item type:** it is possible to create different control cards to record the measurements linked to a specific item in line with its purchasing or production process. The "Control Card" is created according to the various measurements that you decide to carry out and is linked to one or more items.
- **Admissible values and control parameters**
- **Measurement historicization** made on the single Purchase or Production Orders with the Quality Instance cards
- **Cards of Measuring instruments**

## QUALITY CONTROL

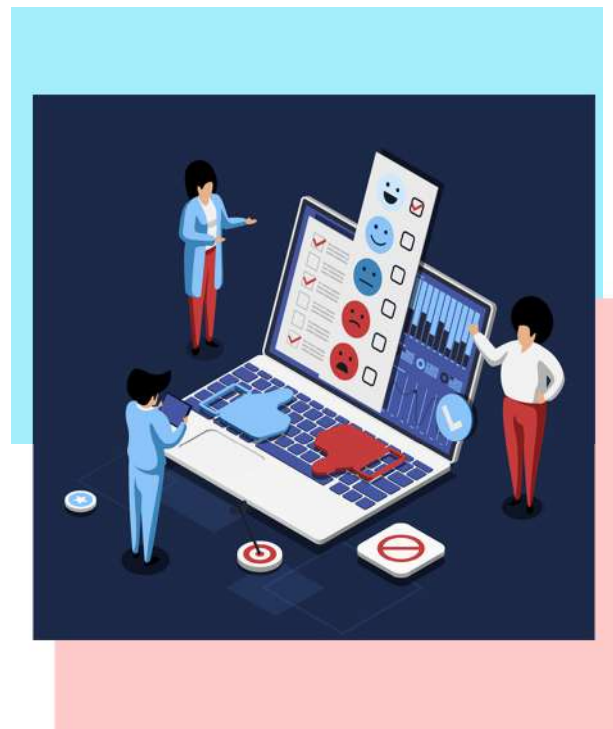
A control order allows to manage the controls of the quantities, received by purchasing or subcontracting, that are subject to inspection.

The incoming quality control management allows to manage the following information:

- **Control order management** linked to the input documents, subcontracting shipping documents and production orders.
- **Control with traceability by Series No. and Lot No.**
- **Control sample sizes**
- **Conformity and NonConformity posting**
- **Loading of the warehouse location or specific placement of items** (with the Quality Set Up) in relation to a receipt from vendors or subcontractors

The conforming quantities are put and moved to the receiving location/placement while the non-conforming quantities are transferred to the non-conforming materials location/placement.

Only the Production orders with an external phase (on Subcontracting) generate a Control Order for the material received from the Subcontractors.



## NON-CONFORMITY

NonConformity management allows the compilation of cards for each item and production orders to evaluate the outcome of the following activities: **customer non-conformity, vendor non-conformity and internal activities about production process (process non-conformities).**



Each NonConformity is followed in its evolution, defining: Type / State / Defects / Solutions / Result of Solutions / Closure.

The item database is linked with an "item card" to the quality measures, where the sampled quantities, non-conforming quantities and control card models are indicated.

## Get started with Tempo Zero QMS

To implement this extension,  
call or e-email us:  
we will put you in touch with an  
authorised NAV-lab partner

✉ [info@navlab.it](mailto:info@navlab.it)

☎ T.: +39.0308930933

📍 [www.navlab.it](http://www.navlab.it)

[www.business-central-app.it](http://www.business-central-app.it)



### **NAV-lab** offices:

Vercelli, Savigliano(Cuneo),  
Borgomanero(Novara), Buguggiate  
(Varese), Casatenovo(Lecco), Milano,  
Sarezzo(Brescia), Verona, Padova,  
Carpi(Modena), Firenze, Prato, Roma,  
Napoli, Salerno, Oria(Brindisi),  
Pomatico(Matera)