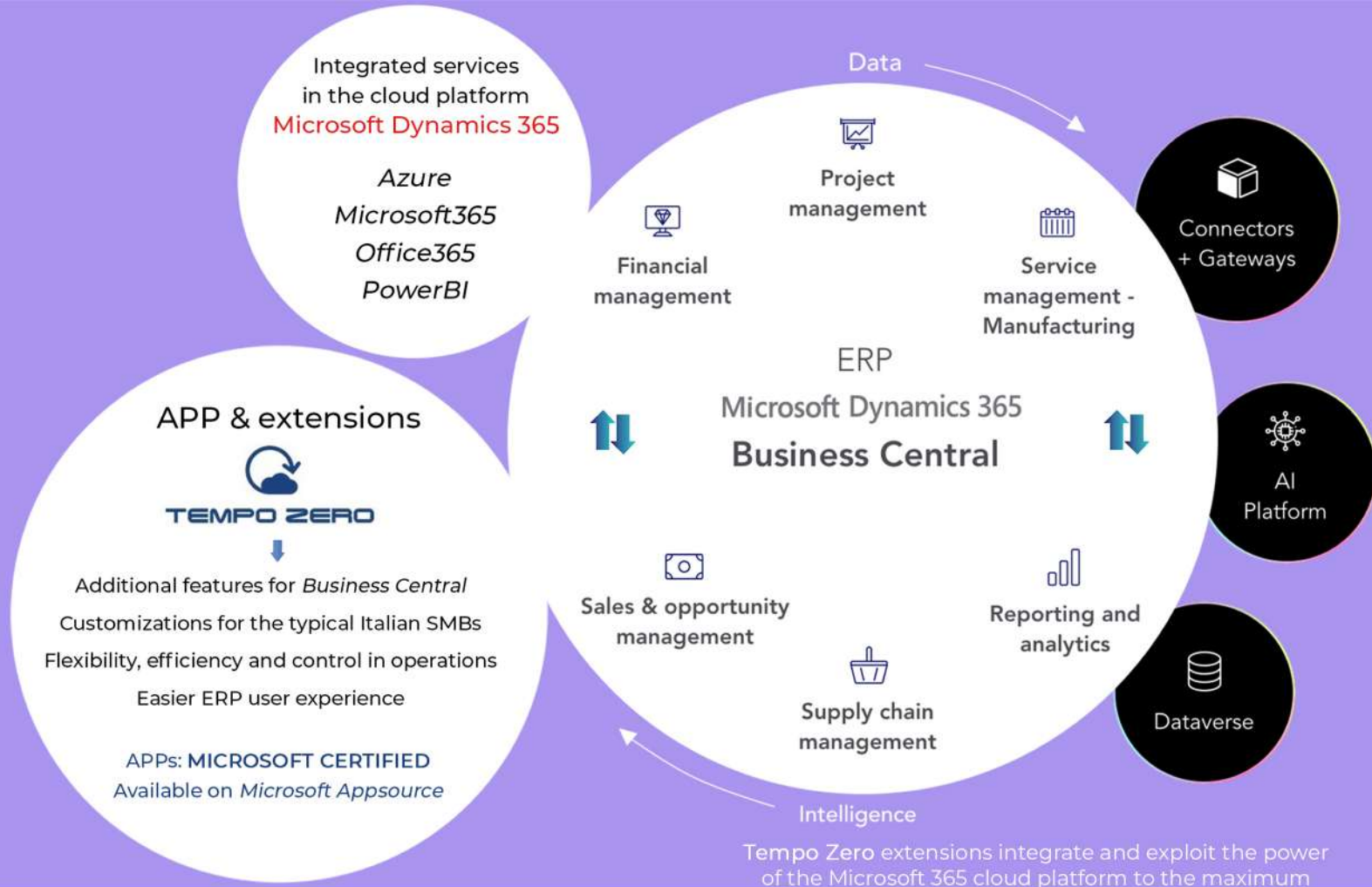


# Tempo Zero MES Connect

for **Microsoft Dynamics 365 Business Central**

*The connector that aligns business management and production through data interchange between MES and ERP.*





## NAV-lab: the power of shared experience

NAV-lab was founded in 2003 by a group of IT managers who chose to offer their customers the ERP Microsoft Dynamics NAV, now *Dynamics 365 Business Central*, as a management system capable of giving flexibility, efficiency and competitiveness to business processes in SMBs.

Since then, NAV-lab has become a fundamental partner for Microsoft in Italy.

The success of *Tempo Zero*, which minimizes the time of adoption of the ERP in the company, was confirmed by the rapid diffusion in terms of new users, until it became the most widespread solution today

in Italy for those who chose the Microsoft ERP.

NAV-lab's strength is its joint investment in R&D: the software laboratory where technical resources, experience and skills, gained in the group's 12 software houses, are shared.

The high quality of the assistance services offered is highly appreciated, both in the ERP start-up phases, including the study and implementation of customised solutions and in the subsequent phases of support for users' daily work.

**NAV-lab Srl** Viale GranSasso 10, 20123 Milano - ITALY

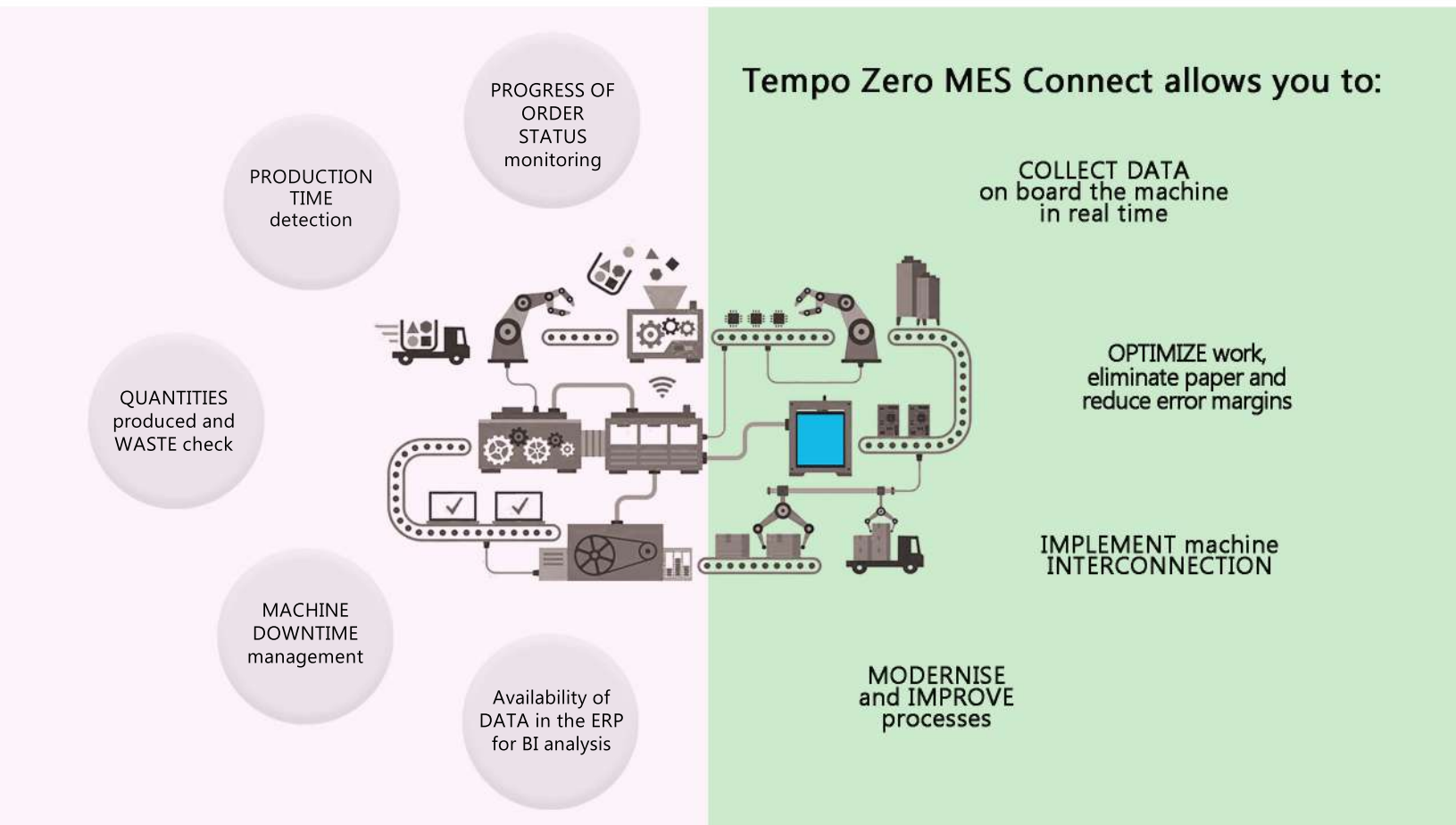
[www.navlab.it](http://www.navlab.it) [www.business-central-app.it](http://www.business-central-app.it) [info@navlab.it](mailto:info@navlab.it) | T.: +39.0308930933

## Tempo Zero MES Connect

**Tempo Zero MES Connect** is a connector that aligns business management and production by interchanging data between the MES (*Manufacturing Execution System*) and ERP management system.

It enables the management and monitoring of the progress of production orders, removing discrepancies with production planning, thus making processes more efficient.

*It thus meets the interconnection requirements of Industry 4.0*



### Alignment between business management and production

Business management and production are aligned, thus avoiding discrepancies between planning and actual production progress.

### Constant monitoring of information

The information, which is recorded in the various departments in automatic or declarative mode by the operator, can be monitored, consulted and analysed at any time.

### Real-time data collection and updating

The collection and updating of data on the progress of orders is done completely and correctly, paperless and from any device used for production.

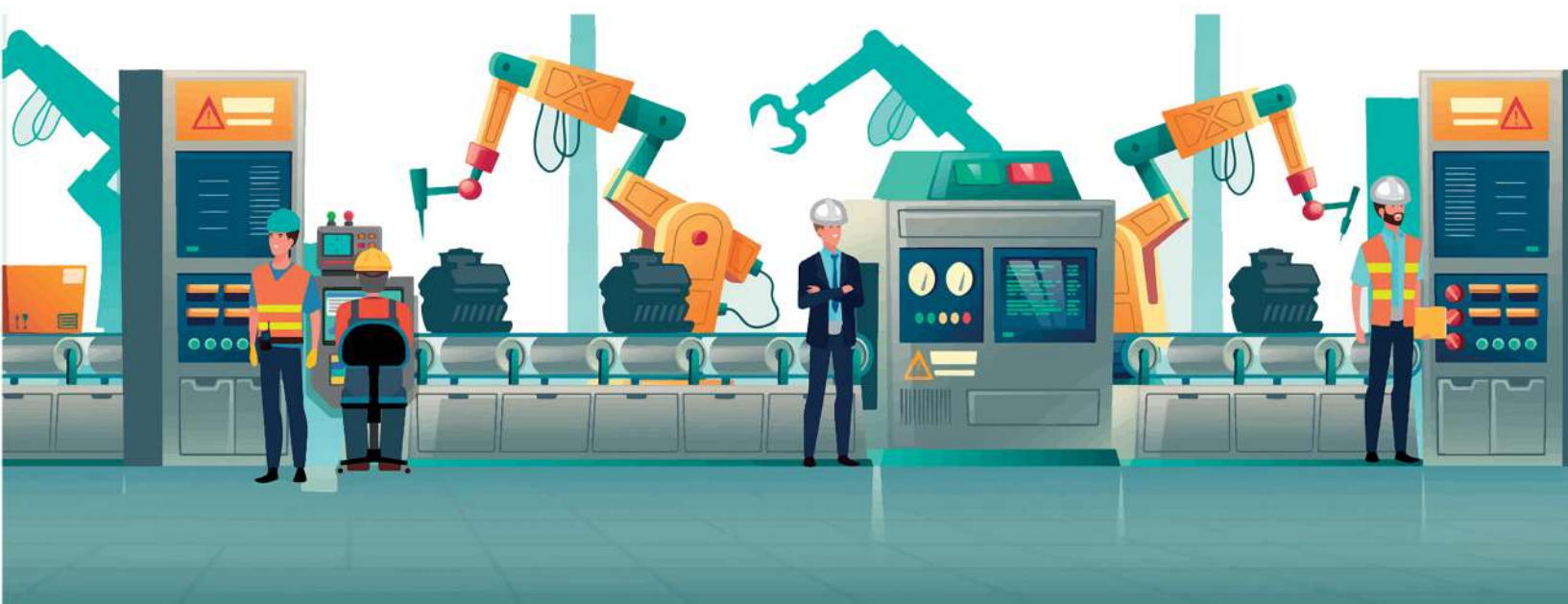
## FEATURES

**Tempo Zero MES Connect** allows manufacturing area users, who log in with appropriate credentials, to use MES features directly in *Microsoft Dynamics 365 Business Central*.

## PRODUCTION CYCLE INFORMATION ON YOUR ERP!

Operators can:

- **manage work orders** (by starting new production orders or monitoring those in progress);
- **check the progress of production orders** at the various processing stages, manage priorities, track actual production;
- **have BI analyses and reports** of production data, correctly collected in real time;
- **keep under control and manage machine downtime**, through the entry of the reason by the operator and the related resumption of work;
- **manage production waste** by evaluating its incidence for possible corrective actions;
- easily gather detailed information on orders by mobile devices, **connect data on-board the machine directly to the ERP**, reducing errors.





## Get started with Tempo Zero MES Connect

Contact us for information,  
consulting or customized demos:

### NAV-lab

✉ [info@navlab.it](mailto:info@navlab.it)

☎ T.: +39.0308930933

📍 [www.business-central-app.it](http://www.business-central-app.it)  
[www.navlab.it](http://www.navlab.it)

To implement the solution:

**INGEST** - founding member of NAV-lab

✉ [marketing@ingest.it](mailto:marketing@ingest.it)

☎ T.: +39.0308930933

📍 [www.ingest.it](http://www.ingest.it)



**NAV-lab** offices in Italy:

Vercelli, Borgomanero (Novara),  
Buguggiate (Varese),  
Casatenovo (Lecco), Milano,  
Sarezzo (Brescia), Verona, Padova,  
Carpi (Modena) Reggio Emilia,  
Firenze, Roma, Napoli, Salerno.